

TT SERIES

DC / DC Single & Dual Output: 1.5 - 25 Watts

Specification:

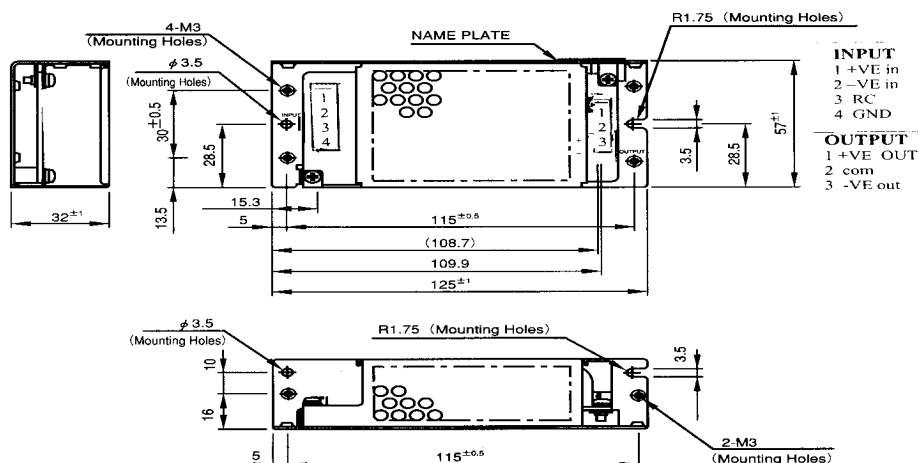


Input Voltage	5VDC (4.5 – 7.2) 12VDC (8 – 16.5)
(1.5 ~ 10W)	24VDC (18 – 32) 48VDC (32 – 63)
Input Voltage	5VDC (4.5 – 7.2) 12VDC (9 – 18)
(15 ~ 25W)	24VDC (18 – 36) 48VDC (36 – 72)
Input Current	Model dependent, consult office.
Efficiency	Model dependent, typically 70 ~ 84 %
Output V Adjust.	V out is fixed for 1.5 – 10W models ± 5% adjustment model 15 – 25W only via external resistor network.
Output Power	Single output: 1.5 – 25 watts Dual output: 1.5 – 10 watt
Load Regulation	Typically ± 0.6%
Line Regulation	Typically ± 0.4%
Output Ripple	120mV for 5V output models. 150mV for other output voltages
OVP	15 – 25W models only, set at 115 – 140% of nominal V out.
Overload Protection	Current limiting.
Temp Coefficient	0.03 % per ° C.
Parallel Operation	No
Series Operation	Yes
Operating Temp.	-20°C to +71°C at rated input and load. Derate from +55°C @ 0.6W per ° C.
Storage Temp.	-40°C to +85°C
Isolation Voltage	Input – Output 500VDC Output – Case 500VDC
Switch Frequency	330KHz 1.5W and 3W models 400KHz 6W – 25W models.
Remote Control:	15 and 25 W models only. Link t RC to –VE input to activate.
Dimensions	125 X 57 X 32mm

Features:

- 94 models to choose from
- Panel mount and DIN-RAIL option "-D"
- 5V, 12V, 24V and 48VDC input options.
- Single and Dual output models.
- Fully isolated floating output.
- Current limiting overload protection
- Voltage trim for 15 and 25 watt models.
- Remote control for 15 and 25 watt models.
- Field proven reliability and performance.
- Wide input voltage range.
- High operating temperature +71°C
- **CONNECTION INSTRUCTIONS:**
- **Input :** +VE and –VE
- **Output / Singles:** +VE and –VE
- **Output / Duals:** +VE, Com, -VE
- **Remote Control (RC)** remove link to make use of this function only available on 15 & 25W modules.

TT Series Mechanical



TT SERIES

DC / DC Single Output: 1.5 - 10 Watts

	Input	Output V / A		Power W
TT1R5-5-5	5V	5V	0.3A	1.5W
TT1R5-5-12	5V	12V	0.12A	1.5W
TT1R5-5-15	5V	15V	0.1A	1.5W
TT1R5-12-5	12V	5V	0.3A	1.5W
TT1R5-12-12	12V	12V	0.12A	1.5W
TT1R5-12-15	12V	15V	0.1A	1.5W
TT1R5-24-5	24V	5V	0.3A	1.5W
TT1R5-24-12	24V	12V	0.12A	1.5W
TT1R5-24-15	24V	15V	0.1A	1.5W
TT1R5-48-5	48V	5V	0.3A	1.5W
TT1R5-48-12	48V	12V	0.12A	1.5W
TT1R5-48-15	48V	15V	0.1A	1.5W
TT3-5-5	5V	5V	0.6A	3W
TT3-5-12	5V	12V	0.24A	3W
TT3-5-15	5V	15V	0.2A	3W
TT3-12-5	12V	5V	0.6A	3W
TT3-12-12	12V	12V	0.24A	3W
TT3-12-15	12V	15V	0.2A	3W
TT3-24-5	24V	5V	0.6A	3W
TT3-24-12	24V	12V	0.24A	3W
TT3-24-15	24V	15V	0.2A	3W
TT3-48-5	48V	5V	0.6A	3W
TT3-48-12	48V	12V	0.24A	3W
TT3-48-15	48V	15V	0.2A	3W
TT6-5-5	5V	5V	1.2A	6W
TT6-5-12	5V	12V	0.5A	6W
TT6-5-15	5V	15V	0.4A	6W
TT6-12-5	12V	5V	1.2A	6W
TT6-12-12	12V	12V	0.5A	6W
TT6-12-15	12V	15V	0.4A	6W
TT6-24-5	24V	5V	1.2A	6W
TT6-24-12	24V	12V	0.5A	6W
TT6-24-15	24V	15V	0.4A	6W
TT6-48-5	48V	5V	1.2A	6W
TT6-48-12	48V	12V	0.5A	6W
TT6-48-15	48V	15V	0.4A	6W

	Input	Output V / A		Power W
TT10-5-5	5V	5V	1.6A	10W
TT10-5-12	5V	12V	0.7A	10W
TT10-5-15	5V	15V	0.6A	10W
TT10-12-5	12V	5V	2.0A	10W
TT10-12-12	12V	12V	0.9A	10W
TT10-12-15	12V	15V	0.7A	10W
TT10-24-5	24V	5V	2.0A	10W
TT10-24-12	24V	12V	0.9A	10W
TT10-24-15	24V	15V	0.7A	10W
TT10-48-5	48V	5V	2.0A	10W
TT10-48-12	48V	12V	0.9A	10W
TT10-48-15	48V	15V	0.7A	10W
TT15-12-5	12V	5V	2.4A	15W
TT15-12-12	12V	12V	1.3A	15W
TT15-12-15	12V	15V	1.0A	15W
TT15-24-5	24V	5V	2.4A	15W
TT15-24-12	24V	12V	1.3A	15W
TT15-24-15	24V	15V	1.0A	15W
TT15-48-5	48V	5V	2.4A	15W
TT15-48-12	48V	12V	1.3A	15W
TT15-48-15	48V	15V	1.0A	15W
TT25-5-3.3	5V	3.3V	3.0A	10W
TT25-5-5.2	5V	5.2V	2.9A	15W
TT25-12-5	12V	5V	4.0A	25W
TT25-12-12	12V	12V	2.1A	25W
TT25-12-15	12V	15V	1.7A	25W
TT25-24-5	24V	5V	4.0A	25W
TT25-24-12	24V	12V	2.1A	25W
TT25-24-15	24V	15V	1.7A	25W
TT25-48-5	48V	5V	4.0A	25W
TT25-48-12	48V	12V	2.1A	25W
TT25-48-15	48V	15V	1.7A	25W

TT SERIES

DC / DC Dual Output: 1.5 - 10 Watts (REV 1)

	Input	Output V / A		Power W
TTD1R5-5-1212	5V	± 12V	0.06A	1.5W
TTD1R5-5-1515	5V	± 15V	0.05A	1.5W
TTD1R5-12-1212	12V	± 12V	0.06A	1.5W
TTD1R5-12-1515	12V	± 15V	0.05A	1.5W
TTD1R5-24-1212	24V	± 12V	0.06A	1.5W
TTD1R5-24-1515	24V	± 15V	0.05A	1.5W
TTD1R5-48-1212	48V	± 12V	0.06A	1.5W
TTD1R5-48-1515	48V	± 15V	0.05A	1.5W
TTD3-5-1212	5V	± 12V	0.12A	3W
TTD3-5-1515	5V	± 15V	0.1A	3W
TTD3-12-1212	12V	± 12V	0.12A	3W
TTD3-12-1515	12V	± 15V	0.1A	3W
TTD3-24-1212	24V	± 12V	0.12A	3W
TTD3-24-1515	24V	± 15V	0.1A	3W
TTD3-48-1212	48V	± 12V	0.12A	3W
TTD3-48-1515	48V	± 15V	0.1A	3W
TTD6-5-1212	5V	± 12V	0.25A	6W
TTD6-5-1515	5V	± 15V	0.2A	6W
TTD6-12-1212	12V	± 12V	0.25A	6W
TTD6-12-1515	12V	± 15V	0.2A	6W
TTD6-24-1212	24V	± 12V	0.25A	6W
TTD6-24-1515	24V	± 15V	0.2A	6W
TTD6-48-1212	48V	± 12V	0.25A	6W
TTD6-48-1515	48V	± 15V	0.2A	6W
TTD10-5-1212	5V	± 12V	0.35A	8W
TTD10-5-1515	5V	± 15V	0.30A	9W
TTD10-12-1212	12V	± 12V	0.45A	10W
TTD10-12-1515	12V	± 15V	0.35A	10W
TTD10-24-1212	24V	± 12V	0.45A	10W
TTD10-24-1515	24V	± 15V	0.35A	10W
TTD10-48-1212	48V	± 12V	0.45A	10W
TTD10-48-1515	48V	± 15V	0.35A	10W