

SWS600HV SERIES

AC / DC Single Output: 600 Watts



Features

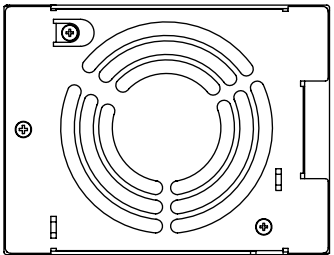
- Universal input 85 - 264VAC
- High output voltage 120VDC
- 600 watts power
- Output voltage adjustment
- Short circuit and OVP protection
- Harmonic correction EN61000-3-2
- Power Factor 0.95
- EMC EN55022, Immunity to EN61000-4
- Input – Output isolation
- High quality design
- Suitable for battery charging applications
- 19in Rack mount option.

General Specifications

Input Voltage	85 ~ 264VAC, 120~370VDC
Frequency	47 ~ 63Hz
Input Current	7.2A / 3.6A (115 / 230VAC)
Power Factor	0.95
Harmonics	EN61000-3-2
Output voltage	120VDC
Output Power	600 watts
Voltage adjustment	See table, front panel trim pot
Ripple & Noise	1.2V pk-pk
Overload Protection	Constant current limiting with auto recovery
Over Voltage Protection	Output shutdown, manual reset by recycling input power after 30 sec.
Over Temperature Protection	Output shutdown, manual reset by recycling input power after 30 sec.
Line Regulation	480mV
Load Regulation	720mV
Hold-Up Time	Typically 20ms

Remote Sense	YES
Remote ON / OFF	Yes (CNT – TOG)
Output Fail Signal	PF-TOG (Open Collector)
Output Current Monitor	CS to –S (0~5V for output current 0-5A)
Indicator	Front panel LED
EMI	EN55011 & EN55022-A
Immunity	EN61000-4
Isolation	Input – Output: 3000VAC Input – FG: 2000VAC Output – FG: 1000VAC
Parallel Operation	NO
Operating Temp	-0°C to +50°C at 100% load, 50% at 70°C
Cooling	Built-in fan
Connector	Screw terminals
Dimensions	SWS600HV: 216 x 120 x 92mm 2kg (W x D x H) (Includes extending terminals)

Model	Output V A	Voltage Range	Power W
SWS600HV-120	120V 5A	108 ~ 130V	600W



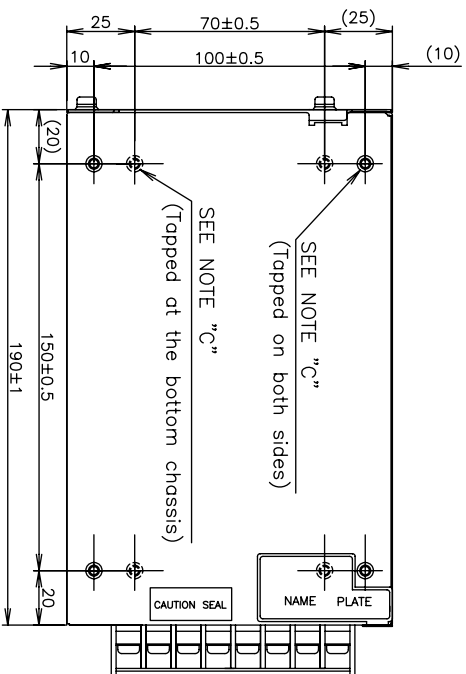
DETAIL OF CAUTION SEAL

ELECTRIC SHOCK HAZARDOUS ON THE CONNECTORS

*Caution: This power supply delivers hazardous output voltage. All outputs(including control signals) are considered as hazardous secondary voltage. These outputs need to be protected so that inadvertent contact by a service person cannot occur. Output circuits must be protected from the operator by reinforced insulation in accordance with EN60950.

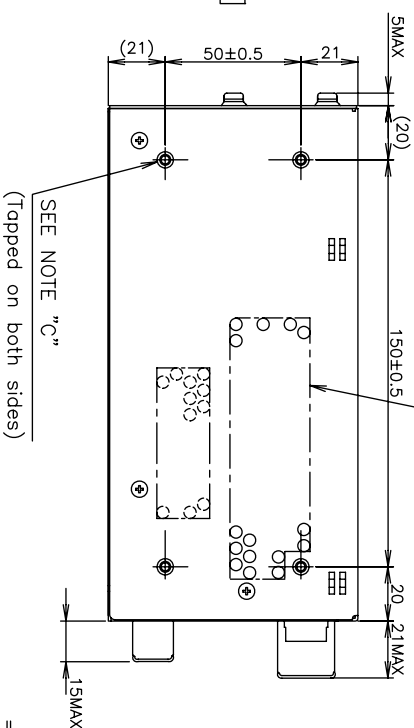
===== ACCESSORIES =====

- * Cover for barrier terminal strip ----- 2
(Mounted on terminal strip at time of shipment)
- * Metal piece for shorting "TOG" & "CNT" ----- 1
(Mounted on terminal strip at time of shipment)
- * Metal piece for shorting "+S" & "+", "-S" & "-" ----- 2
(Mounted on terminal strip at time of shipment)

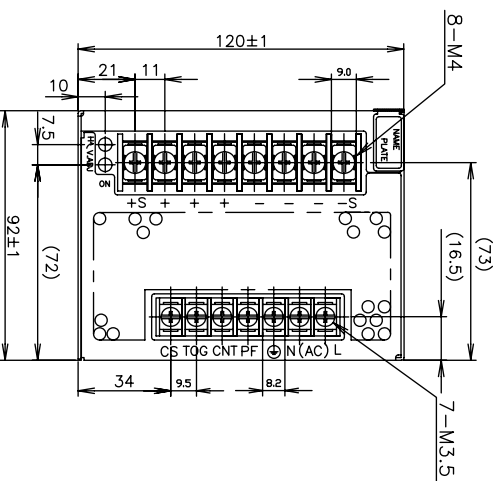


Holes at the opposite chassis

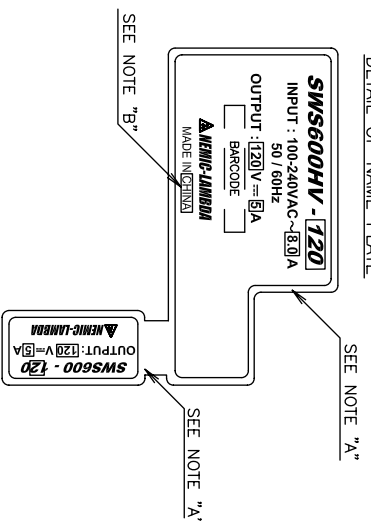
AIR FLOW



TENTATIVE



DETAIL OF NAME PLATE



- ==== NOTES =====
- A: Model name, nominal output voltage and maximum output current are shown here in accordance with the specifications.
 - B: Country of manufacture will be shown here.
 - C: M4 tapped holes (20) for customer chassis mounting.
(Screws must not protrude into power supply)
by more than 6m/m.



D REV	-XI	NEW RELEASE	CONTENTS	DATE	ENGR	CHK	APPD
				07.Apr.'05	MinFeng	KEVIN	KT.NG

SCALE	1/2	MATERIALS	TITLE
UNITS	m/m		OUTLINE DRAWING
3RD ANGLE PROJECTION			
DRAWING No.	XCA750-02-01-		
	DENSEI-LAMBDA		