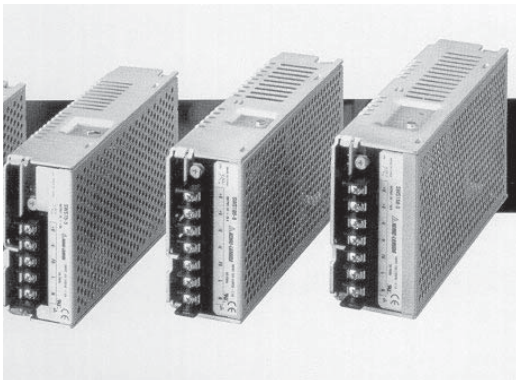


SWS SERIES

AC/DC Single Output: 50 - 150 Watts



Features

- Universal input 85~264 VAC
- Optimum solution in cost and quality
- Power levels of 50, 75, 100 and 150 watts
- Harmonics to EN61000-3-2, Power Factor 0.95/0.99
- EMI/RFI: EN55022-B
- EN60950 safety standard
- CE marked
- Compact size
- LED indicators for power on
- Fully regulated outputs
- Zero load operation
- Short circuit protection
- Overvoltage protection
- Convection cooled

Specifications

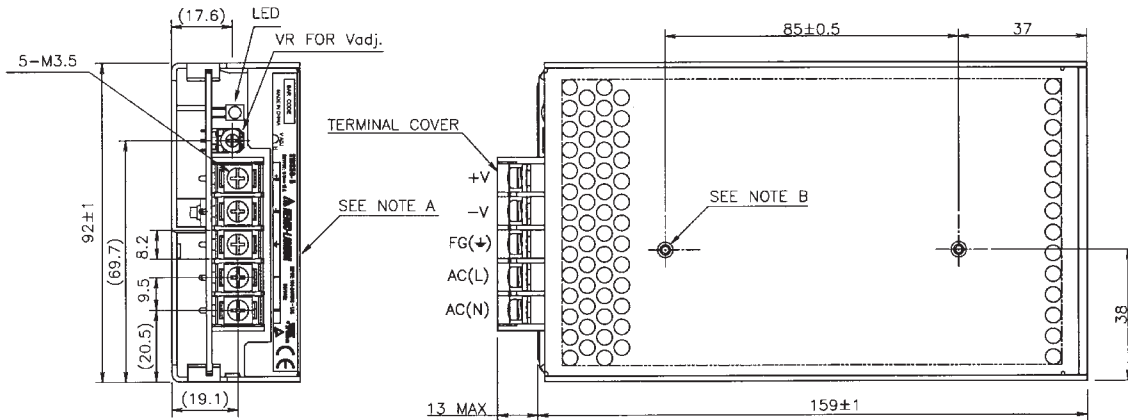
INPUT :	85~264 VAC 120~370 VDC
FREQUENCY:	47~63Hz
OUTPUT VOLTAGE:	Refer to table
INDICATOR:	Power ON LED
OUTPUT V RANGE:	3.3V (2.97~3.63), 5V (4.5~5.5), 12V (10.8~13.2), 15V (13.5~16.5) 18V (16.2~19.8) 24V (21.6~26.4)
OUTPUT POWER:	50~150 watts
EFFICIENCY:	Model dependent typically 75~80%
INPUT CURRENT: (at 230 VAC)	Model dependent 0.6A~0.9A (50-150W)
INRUSH CURRENT:	40A at 230 VAC cold start
INPUT HARMONICS:	EN61000-3-2
RIPPLE & NOISE:	80~150mV
LOAD REGULATION:	±0.8%
OVERCURRENT PROTECTION:	Current limiting with auto recovery set at approximately 110% of rating
OVERVOLTAGE PROTECT:	OVP circuit will shutdown. Recycle AC supply to reset after 30 seconds
HOLD-UP TIME:	Typically 160ms at 230 VAC
LEAKAGE CURRENT:	0.6mA at 230 VAC
PARALLEL OPERATION:	NO
OPERATING TEMP:	-10°C to +60°C, with derating above 40°C
HUMIDITY:	30~90% RH
COOLING:	Convection cooled
ISOLATION VOLTAGE:	Input-Output: 3000 VAC
SAFETY:	UL1950, EN60950, EN50178
EMI:	EN55022 level B
IMMUNITY:	EN61000-4-2, -3, -4, -5, -6, -8, -11
DIMENSIONS & WEIGHT: (H x W x L)	50W: 37 x 92 x 172mm 400g 75W: 43 x 94 x 183mm 480g 100W: 45 x 96 x 201mm 600g 150W: 51 x 99 x 211mm 750g

MODEL	Output		Power W
	V	A	
SWS50 - 3	3.3V	10A	33W
SWS50 - 5	5V	10A	50W
SWS50 - 12	12V	4.3A	50W
SWS50 - 15	15V	3.5A	50W
SWS50 - 18	18V	2.8A	50W
SWS50 - 24	24V	2.1A	50W
SWS75 - 3	3.3V	15A	50W
SWS75 - 5	5V	15A	75W
SWS75 - 12	12V	6.3A	75W
SWS75 - 15	15V	5.0A	75W
SWS75 - 24	24V	3.2A	75W
SWS100-3	3.3V	20A	66W
SWS100 - 5	5V	20A	100W
SWS100 - 12	12V	8.5A	100W
SWS100 - 15	15V	6.7A	100W
SWS100 - 24	24V	4.3A	100W
SWS150 - 3	3.3V	30A	100W
SWS150 - 5	5V	30A	150W
SWS150 - 12	12V	12.5A	150W
SWS150 - 15	15V	10A	150W
SWS150 - 18	18V	8.4A	150W
SWS150 - 24	24V	6.3A	150W

SWS SERIES

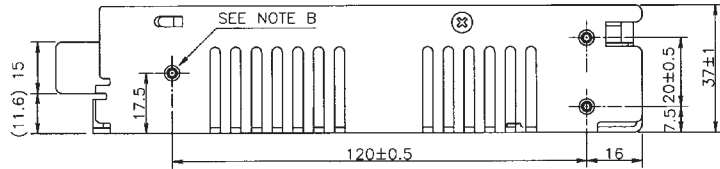
AC/DC Single Output: 50 - 150 Watts

SWS50

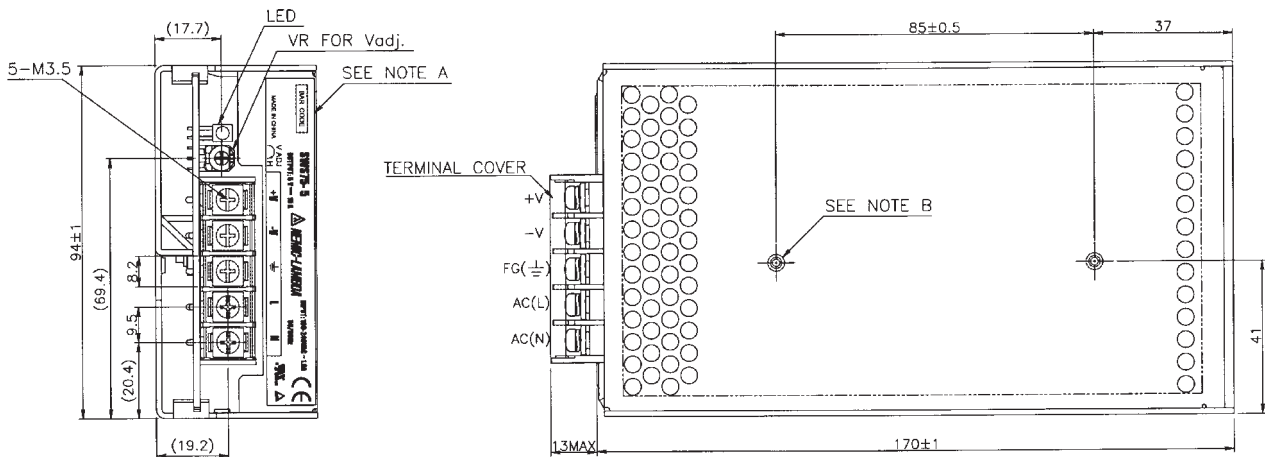


NOTES

- A: MODEL NAME, INPUT VOLTAGE RANGE, NOMINAL OUTPUT VOLTAGE, MAXIMUM OUTPUT CURRENT AND COUNTRY OF MANUFACTURE ARE SHOWN HERE IN ACCORDANCE WITH THE SPECIFICATIONS.
- B: M3 EMBOSSED, TAPPED AND COUNTERSUNK HOLES (5) FOR CUSTOMER CHASSIS MOUNTING. SCREWS MUST NOT PROTRUDE INTO POWER SUPPLY BY MORE THAN 6m/m.

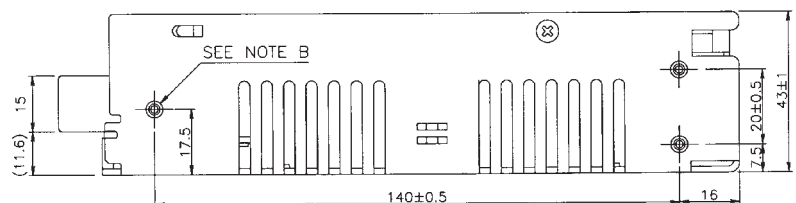


SWS75



NOTES

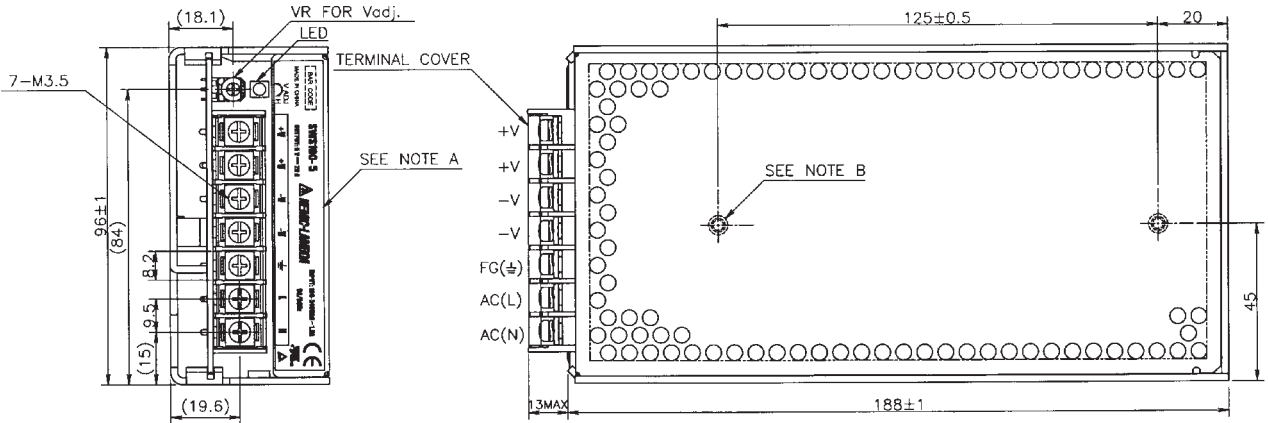
- A: MODEL NAME, INPUT VOLTAGE RANGE, NOMINAL OUTPUT VOLTAGE, MAXIMUM OUTPUT CURRENT AND COUNTRY OF MANUFACTURE ARE SHOWN HERE IN ACCORDANCE WITH THE SPECIFICATIONS.
- B: M3 EMBOSSED, TAPPED AND COUNTERSUNK HOLES (5) FOR CUSTOMER CHASSIS MOUNTING. SCREWS MUST NOT PROTRUDE INTO POWER SUPPLY BY MORE THAN 6m/m.



SWS SERIES

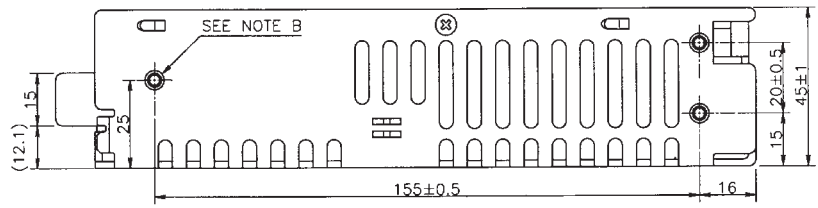
AC/DC Single Output: 50 - 150 Watts

SWS100

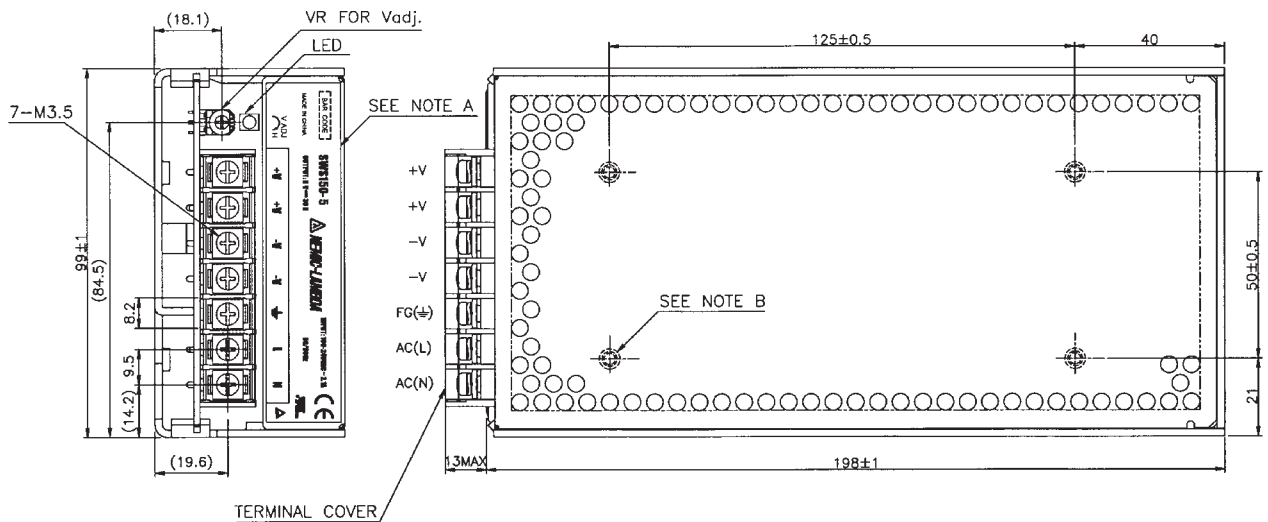


NOTES

- A: MODEL NAME, INPUT VOLTAGE RANGE, NOMINAL OUTPUT VOLTAGE, MAXIMUM OUTPUT CURRENT AND COUNTRY OF MANUFACTURE ARE SHOWN HERE IN ACCORDANCE WITH THE SPECIFICATIONS.
- B: M4 EMBOSSED, TAPPED AND COUNTERSUNK HOLES (5) FOR CUSTOMER CHASSIS MOUNTING. SCREWS MUST NOT PROTRUDE INTO POWER SUPPLY BY MORE THAN 6m/m.



SWS150



NOTES

- A: MODEL NAME, INPUT VOLTAGE RANGE, NOMINAL OUTPUT VOLTAGE, MAXIMUM OUTPUT CURRENT AND COUNTRY OF MANUFACTURE ARE SHOWN HERE IN ACCORDANCE WITH THE SPECIFICATIONS.
- B: M4 EMBOSSED, TAPPED AND COUNTERSUNK HOLES (7) FOR CUSTOMER CHASSIS MOUNTING. SCREWS MUST NOT PROTRUDE INTO POWER SUPPLY BY MORE THAN 6m/m.

