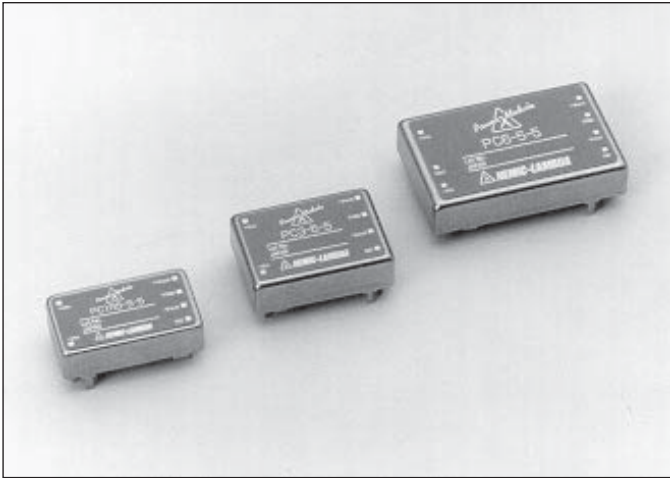


PC SERIES

DC/DC Single & Dual Output: 1.5 - 6 Watts



Features

- Wide DC input range
- Input voltage 5V, 12V, 24V and 48VDC
- Low profile PCB mounting modules
- Remote ON/OFF
- Five dimensional shielded metal case
- Adjustable output via TRIM terminal
- Single and dual output
- Overcurrent protection
- High operating temperature range +70°C
- Input - output isolation

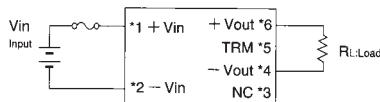
Specifications

INPUT VOLTAGE:	5VDC (4.5~9V) 12VDC (9~18V) 24VDC (18~36V) 48VDC (36~72V)
EFFICIENCY:	Model dependent 66%~85%
OUTPUT VOLTAGE:	Refer to table
VOLTAGE ADJUSTMENT: (By TRIM terminal)	3.3V models: adjustable 3.67V 5V models: adjustable to 6V 12V models: adjustable to 15V ±12V models adjustable to ±15V
OUTPUT VOLT. ACCURACY:	Output accuracy within ±5% and includes load and line regulation and temperature drift
OUTPUT POWER:	1.5~6 watts
PROTECTION:	Output current limiting with auto recovery
ISOLATION:	Input - output: 500VDC Input - case: 500VDC Output - case: 500VDC
COOLING:	Convection cooled
HUMIDITY:	5~95% RH non-condensing
OPERATING TEMPERATURE:	-20°C to 50°C at 100% load, +60°C at 70% load, +70°C at 40% load
REMOTE ON/OFF:	CNT terminal short = On CNT terminal open = Off
DIMENSIONS:	PC1R5: 28 x 16 x 7.8mm PC3: 28.5 x 20 x 8.5mm PC6: 41 x 26 x 8.5mm

TERMINAL CONNECTION PC1R5 (1.5W type) / PC3 (3W type)

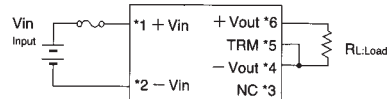
Output voltage can be adjusted by TRM terminal. Output power must be within the rating, when increasing the output voltage.

*1 TRM terminal: Open



Type	3.3V type	5V type	12V type
Output voltage	3.3V	5V	12V

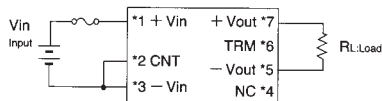
*2 TRM terminal & -Vout terminal: Short



Type	3.3V type	5V type	12V type
Output voltage	3.67V	6V	15V

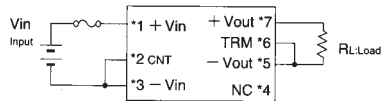
[PC6 (6W type)]

*1 TRM terminal: Open



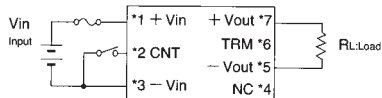
Type	3.3V type	5V type	12V type
Output voltage	3.3V	5V	12V

*2 TRM terminal & -Vout terminal: Short



Type	3.3V type	5V type	12V type
Output voltage	3.67V	6V	15V

*3 CNT terminal: Remote ON/OFF control



CNT terminal	Output
CNT --Vin: Short or 0 ~ 0.4V	ON
CNT --Vin: Open or 2V ~ Vin	OFF

* Output voltage: Refer to TRM terminal connection

PC SERIES

DC/DC Single & Dual Output: 1.5 - 6 Watts

MODEL	Input	Output		Power W
		V	A	
PC1R5 - 5 - 3.3	5V	3.3V	400mA	1.32W
PC1R5 - 5 - 5	5V	5V	300mA	1.5W
PC1R5 - 5 - 12	5V	12/15V	125/100mA	1.5W
PC1R5 - 12 - 3.3	12V	3.3V	400mA	1.32W
PC1R5 - 12 - 5	12V	5V	300mA	1.5W
PC1R5 - 12 - 12	12V	12/15V	125/100mA	1.5W
PC1R5 - 24 - 3.3	24V	3.3V	400mA	1.32W
PC1R5 - 24 - 5	24V	5V	300mA	1.5W
PC1R5 - 24 - 12	24V	12/15V	125/100mA	1.5W
PC1R5 - 48 - 3.3	48V	3.3V	400mA	1.32W
PC1R5 - 48 - 5	48V	5V	300mA	1.5W
PC1R5 - 48 - 12	48V	12/15V	125/100mA	1.5W
PC3 - 5 - 3.3	5V	3.3V	600mA	1.98W
PC3 - 5 - 5	5V	5V	600mA	3.0W
PC3 - 5 - 12	5V	12/15V	250/200mA	3.0W
PC3 - 12 - 3.3	12V	3.3V	600mA	1.98W
PC3 - 12 - 5	12V	5V	600mA	3.0W
PC3 - 12 - 12	12V	12/15V	250/200mA	3.0W
PC3 - 24 - 3.3	24V	3.3V	600mA	1.98W
PC3 - 24 - 5	24V	5V	600mA	3.0W
PC3 - 24 - 12	24V	12/15V	250/200mA	3.0W
PC3 - 48 - 3.3	48V	3.3V	600mA	1.98W
PC3 - 48 - 5	48V	5V	600mA	3.0W
PC3 - 48 - 12	48V	12/15V	250/200mA	3.0W
PC6 - 5 - 3.3	5V	3.3V	1.2A	3.96W
PC6 - 5 - 5	5V	5V	1.0A	6.0W
PC6 - 5 - 12	5V	12/15V	500/400mA	6.0W
PC6 - 12 - 3.3	12V	3.3V	1.5A	5.0W
PC6 - 12 - 5	12V	5V	1.0A	6.0W
PC6 - 12 - 12	12V	12/15V	500/400mA	6.0W
PC6 - 24 - 3.3	24V	3.3V	1.5A	5.0W
PC6 - 24 - 5	24V	5V	1.0A	6.0W
PC6 - 24 - 12	24V	12/15V	500/400mA	6.0W
PC6 - 48 - 3.3	48V	3.3V	1.5A	5.0W
PC6 - 48 - 5	48V	5V	1.0A	6.0W
PC6 - 48 - 12	48V	12/15V	500/400mA	6.0W

MODEL	Input	Output		Power W
		V	A	
PCD1R5 - 5 - 1212	5V	±12V ±15V	±60mA ±50mA	1.5W
PCD1R5 - 12 - 1212	12V	±12V ±15V	±60mA ±50mA	1.5W
PCD1R5 - 24 - 1212	24V	±12V ±15V	±60mA ±50mA	1.5W
PCD1R5 - 48 - 1212	48V	±12V ±15V	±60mA ±50mA	1.5W
PCD3 - 5 - 1212	5V	±12V ±15V	±125mA ±100mA	3.0W
PCD3 - 12 - 1212	12V	±12V ±15V	±125mA ±100mA	3.0W
PCD3 - 24 - 1212	24V	±12V ±15V	±125mA ±100mA	3.0W
PCD3 - 48 - 1212	48V	±12V ±15V	±125mA ±100mA	3.0W
PCD6 - 5 - 1212	5V	±12V ±15V	±250mA ±200mA	6.0W
PCD6 - 12 - 1212	12V	±12V ±15V	±250mA ±200mA	6.0W
PCD6 - 24 - 1212	24V	±12V ±15V	±250mA ±200mA	6.0W
PCD6 - 48 - 1212	48V	±12V ±15V	±250mA ±200mA	6.0W

NOTES:

Single output models can have their output adjusted upwards by connection of -Vout to TRIM terminal.

- 3.3V is adjustable to 3.67V • 5V is adjustable to 6.0V
- 12V is adjustable to 15V

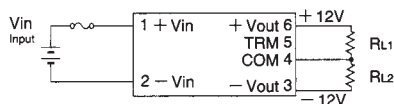
Dual output models can have their output adjusted upwards by connection of -Vout to TRIM terminal.

- ±12V is adjustable to ±15V

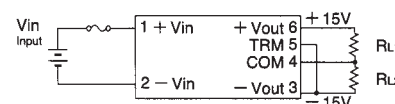
TERMINAL CONNECTION PCD1R5 (1.5W type) / PCD3 (3W type)

Output voltage can be adjusted by TRM terminal. Output power must be within the rating, when increasing the output voltage.

***1 TRM terminal: Open**
Output: ±12V

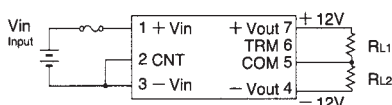


***2 TRM terminal & -Vout terminal: Short**
Output: ±15V

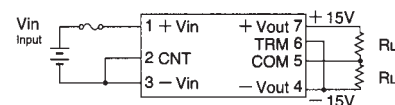


[PCD6 (6W type)]

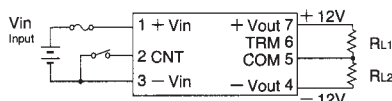
***1 TRM terminal: Open**
Output: ±12V



***2 TRM terminal & -Vout terminal: Short**
Output: ±15V



CNT terminal: Remote ON/OFF control



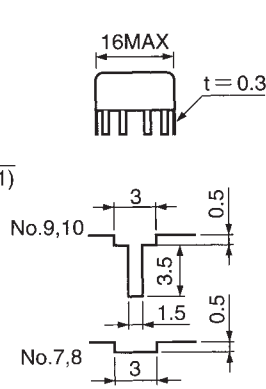
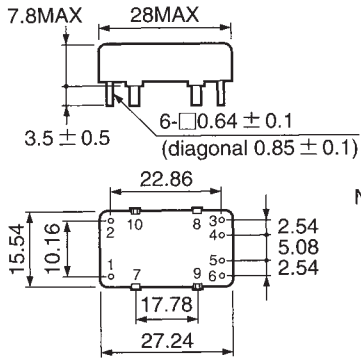
CNT terminal	Output
CNT--Vin: Short or 0 ~ 0.4V	ON
CNT--Vin: Open or 2V ~ Vin	OFF

* Output voltage: Refer to TRM terminal connection

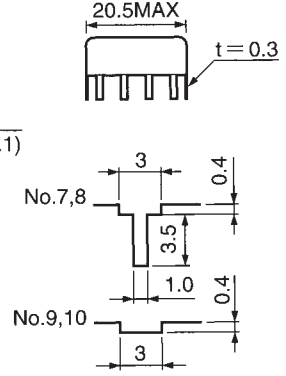
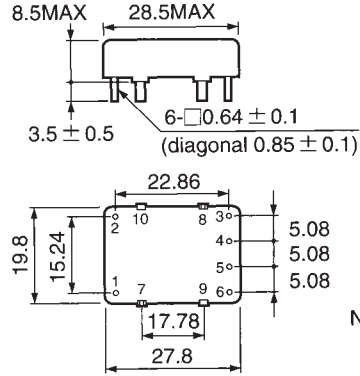
PC SERIES

DC/DC Single & Dual Output: 1.5 - 6 Watts

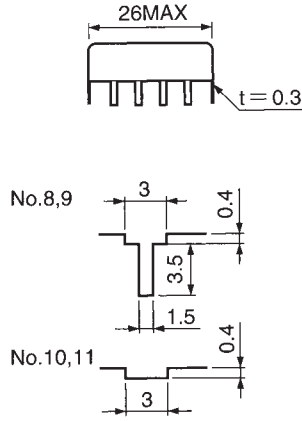
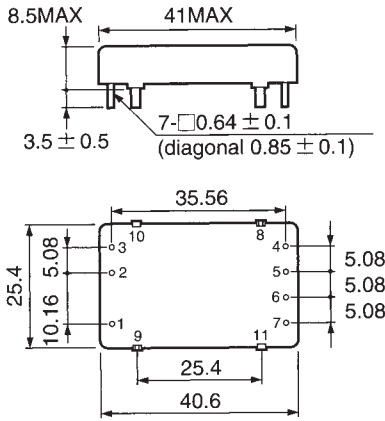
PCR1R5



PC3

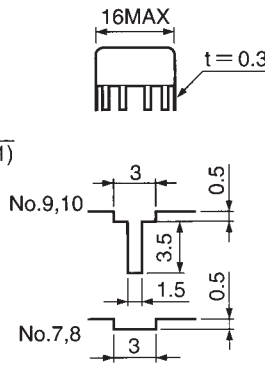
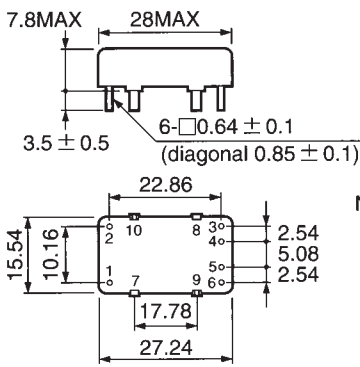


PC6

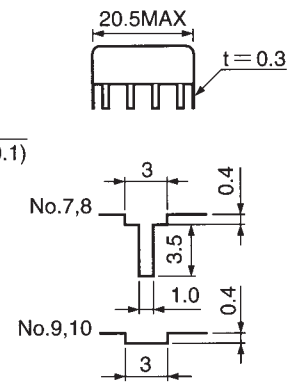
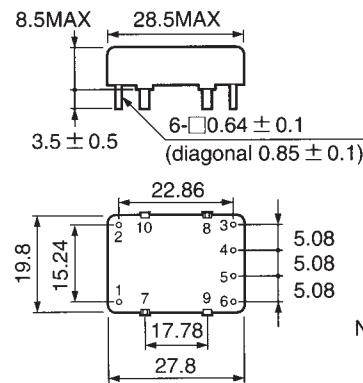


(Unit: mm)
Dimension tolerance not designated is ±0.3.

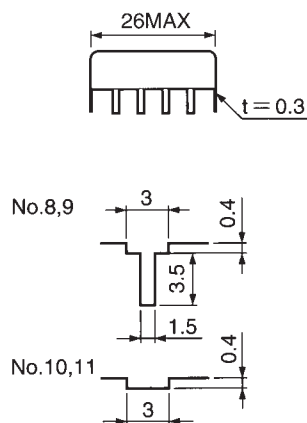
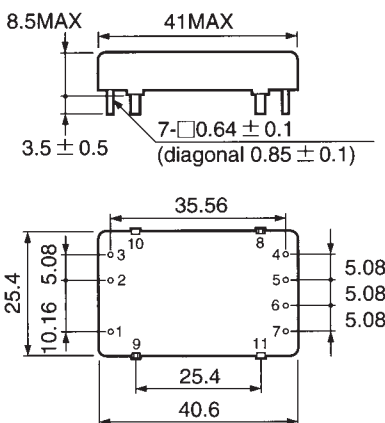
PCD1R5



PCD3



PCD6



(Unit: mm)
Dimension tolerance not designated is ±0.3.