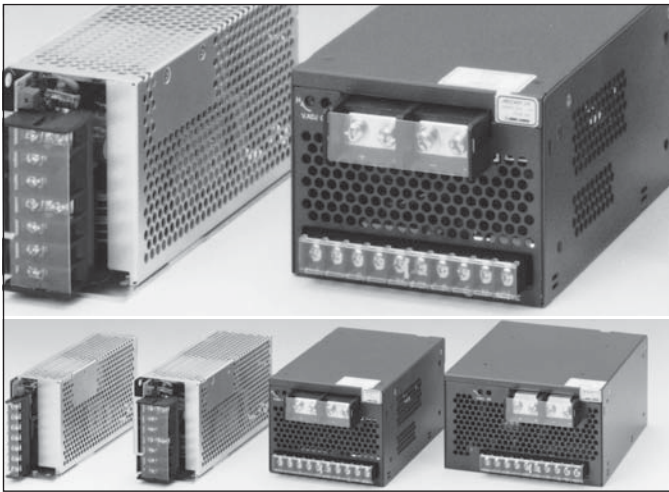


JWS - P SERIES

AC/DC Single Output: 70 - 480 Watts



Features

- Universal input 85 - 264VAC.
- 70~480 watt models with high peak capability.
- Harmonic current per EN61000-3-2.
- Power factor correction: 0.99 typical.
- Floating output, fully isolated.
- Single regulated output with remote sense.
- EMC to EN55011-A and EN55022-A.
- Immunity to EN6100-4-2, -3, -4, -5, -6.
- EN60950/UL1950 certification.
- Vented case package suitable for panel mounting.
- DIN Rail mounting options.
- Suitable for a wide range of industrial, automation and process control applications.

MODEL	Output		Peak A	Power W
	V	A		
JWS70P - 24	24V	3A	6A	72W
JWS120P - 24	24V	5A	10A	120W
JWS240P - 24	24V	10A	20A	240W
JWS480P - 24	24V	20A	40A	480W
JWS70P - 48	48V	1.5A	3A	72W
JWS120P - 48	48V	2.5A	5A	120W
JWS240P - 48	48V	5A	10A	240W
JWS480P - 48	48V	10A	20A	480W

- Output peak current 10 sec. with 50% maximum duty cycle.



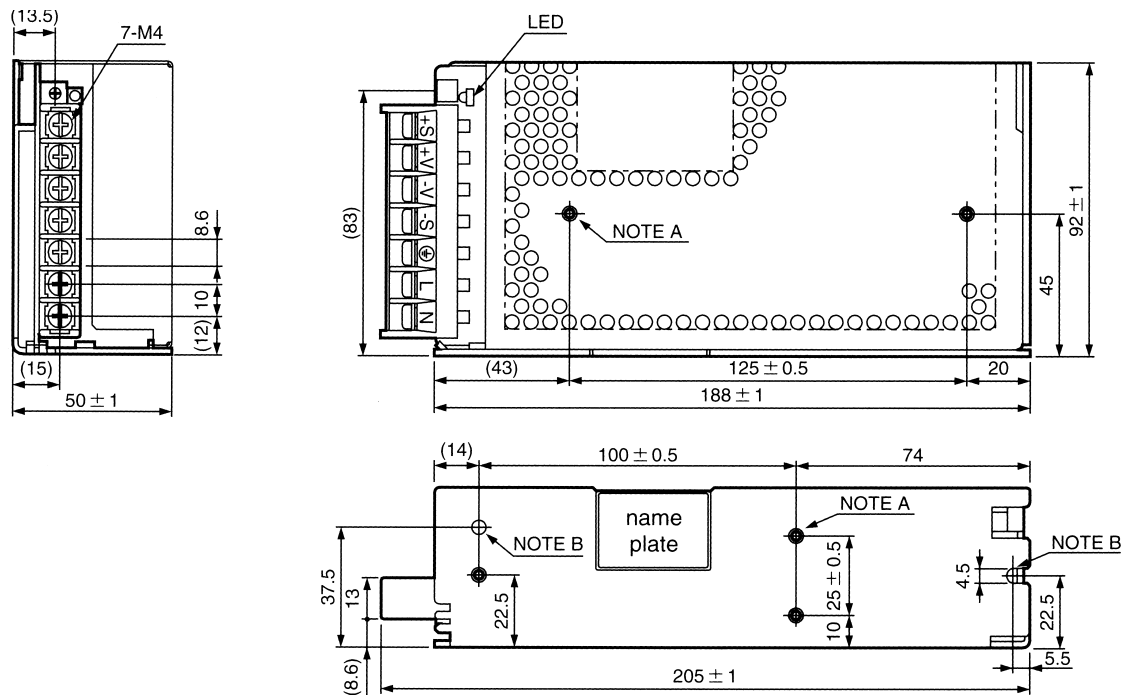
Specifications

INPUT VOLTAGE:	85 - 264VAC (120 - 330VDC)
POWER FACTOR:	0.99 @ 100VAC, 0.95 @ 230VAC
FREQUENCY:	47 - 63Hz
EFFICIENCY:	Model dependent typically 80%
INPUT CURRENT:	JWS70: 0.5A @ 200VAC JWS120: 0.8A @ 200VAC JWS240: 1.6A @ 200VAC JWS480: 3.2A @ 200VAC
OUTPUT POWER:	70-480W: refer to table
OUTPUT VOLTAGE:	24 and 48V models: refer to table
OUTPUT V. ADJUSTMENT:	Typically $\pm 10\%$ of nominal
LINE REGULATION:	Typically $\pm 0.4\%$ over input range
LOAD REGULATION:	Typically $\pm 0.8\%$ from no load to full load.
MINIMUM LOAD:	Units will operate with zero load
TEMP. CO-EFFICIENT:	0.02% per $^{\circ}\text{C}$
OUTPUT NOISE:	Typically 1% of nominal V out
OVP:	OVP will shut down unit, manual reset by AC on line recycle
OVERLOAD PROTECTION:	Constant current limiting set at approx. 105% of output current with auto recovery and thermal protection
HOLD UP TIME:	20ms at rated power and input
LEAKAGE CURRENT:	0.75mA / 0.44mA @ 100 / 200VAC
REMOTE SENSE:	Yes
REMOTE ON/OFF:	JWS240 and JWS480 models only
PARALLEL OPERATION:	No
SERIES OPERATION:	Yes
OPERATING TEMP:	-10 $^{\circ}\text{C}$ to +50 $^{\circ}\text{C}$ at 100% load, derate to 60% load at 60 $^{\circ}\text{C}$
HUMIDITY:	30 - 95% RH non condensing
COOLING:	Convection cooled: 70 - 120W models Internal fan: 240 - 480W models
ISOLATION:	Input - output 3000VAC Input - chassis 2000VAC Output - frame 500VAC
VIBRATION & SHOCK:	2G constant operating, <20G shock
SAFETY:	Approved to IEC950, EN60950, UL1950
EMI/RFI:	EN55011/EN55022/AS3548 class A
CONNECTIONS:	Screw terminals
DIMENSIONS:	JWS70: 205 x 92 x 50mm 700g JWS120: 217 x 92 x 65mm 900g JWS240: 206 x 120 x 92mm 1900g JWS480: 226 x 160 x 92mm 3000g

JWS - P SERIES

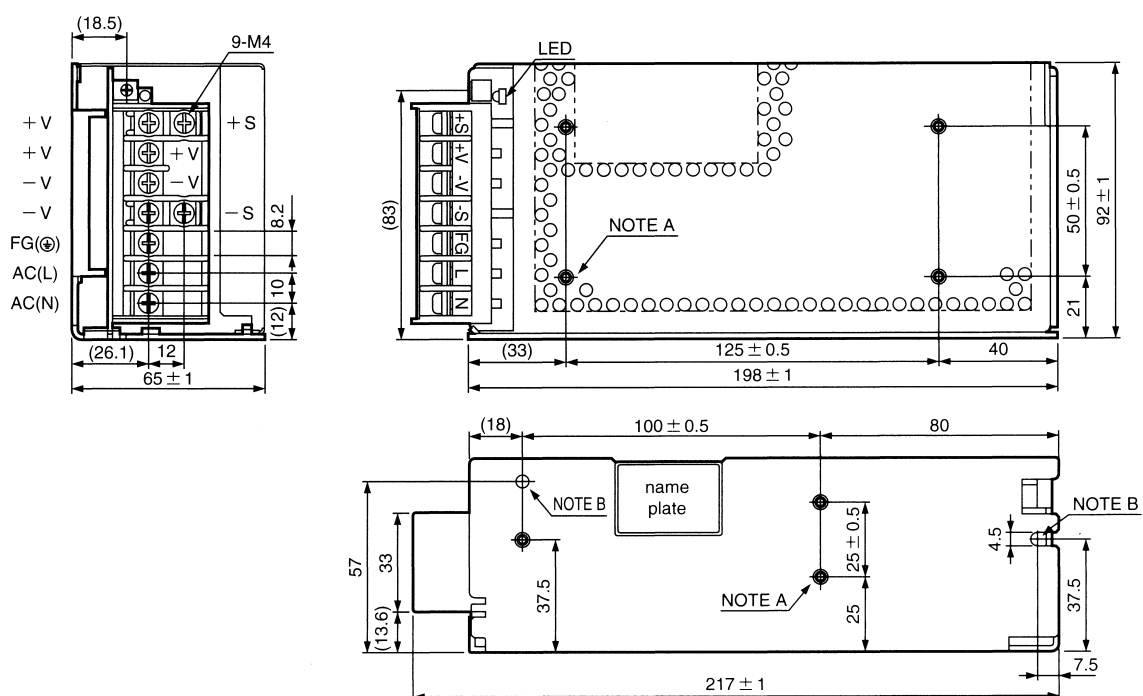
AC/DC Single Output: 70 - 480 Watts

JWS70P



(Unit: mm)

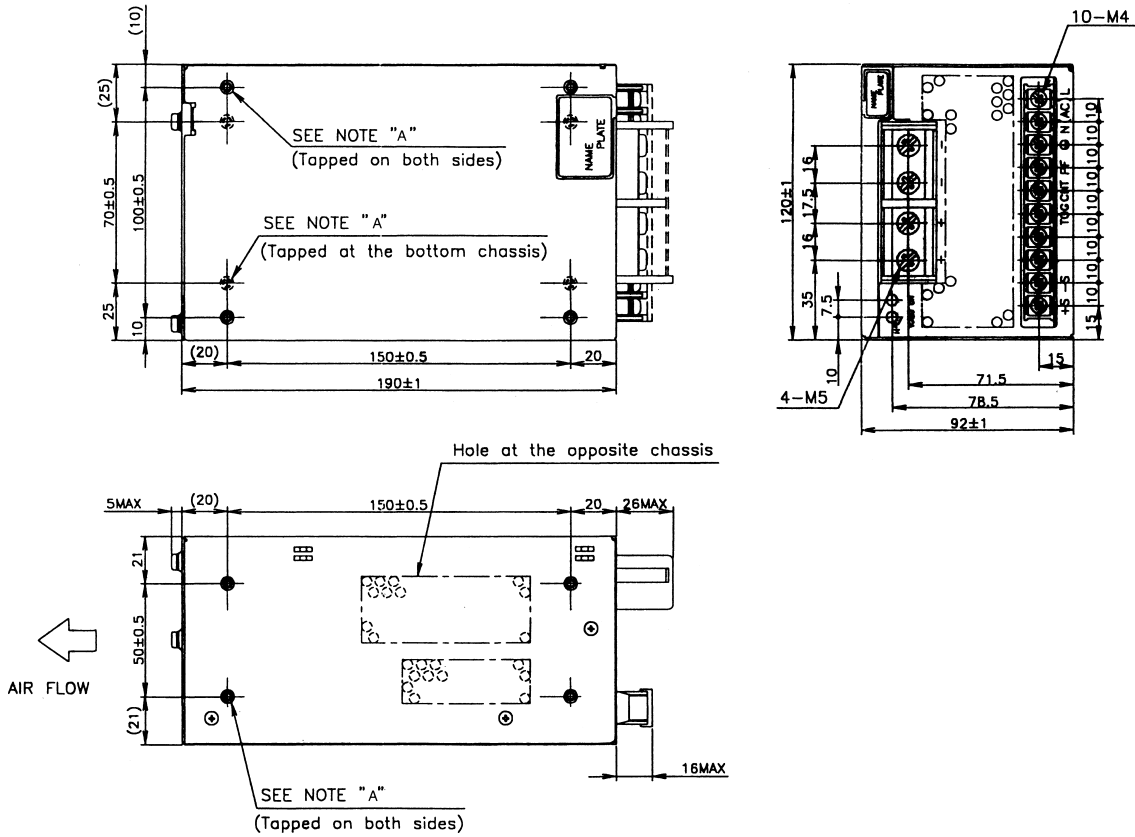
JWS120P



JWS - P SERIES

AC/DC Single Output: 70 - 480 Watts

JWS240P



JWS480P

