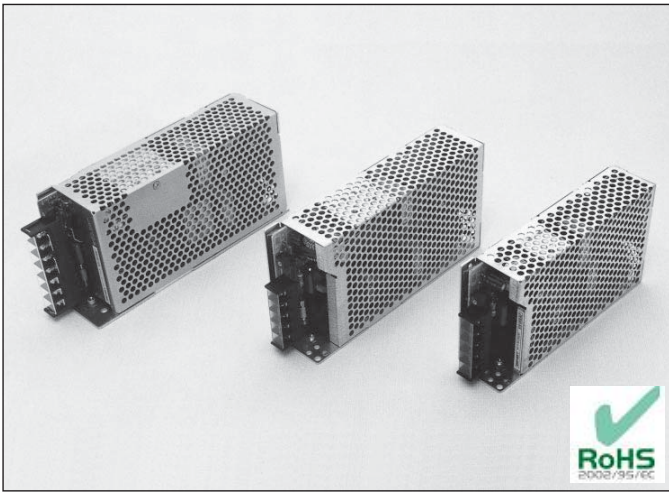


JWS50 - 150 SERIES

AC/DC Single Output: 50 - 150 Watts



Features

- Universal input 85 - 264VAC.
- 50~150 watt models.
- Harmonic current per EN61000-3-2.
- Power factor correction: 0.99 typical.
- Floating output, fully isolated.
- Single regulated output with remote sense.
- Remote on/off option.
- EMC to EN55011-B and EN55022-B.
- Immunity to EN6100-4-2, -3, -4, -5, -6.
- EN60950/UL1950 certification and CE marked.
- AS3260 safety approval No. CS99074V
- OVP and overload protection.
- Vented case package suitable for panel mounting.
- DIN Rail clips or DIN Rail bracket (optional).
- Panel mount options.
- Suitable for a wide range of industrial, automation and telecom applications.
- See 300 - 600 watt series for higher power.

DIMENSIONS (mm)

MODEL	L x W x H	Weight g
JWS50	171 x 85 x 37	350
JWS75	187 x 92 x 42	450
JWS100	205 x 92 x 50	650
JWS150	217 x 92 x 65	850

Specifications

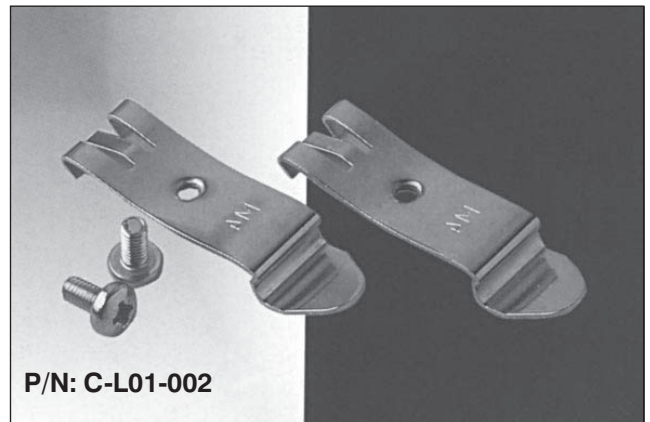
INPUT VOLTAGE:	85 - 264VAC (120 - 330VDC)
POWER FACTOR:	0.99 @ 100VAC, 0.95 @ 230VAC
FREQUENCY:	47 - 63Hz
EFFICIENCY:	Model dependent typically 65 - 80%
INRUSH CURRENT:	50-100W models 28A @ 200VAC 150W models 50A @ 200VAC
OUTPUT POWER:	50 ~ 150W
OUTPUT VOLTAGE:	3V ~ 48V models: refer to table
OUTPUT V. ADJUSTMENT:	Typically $\pm 10\%$ of nominal
LINE REGULATION:	Typically $\pm 0.4\%$ over input range
LOAD REGULATION:	Typically $\pm 0.6\%$ from no load to full load.
MINIMUM LOAD:	Units will operate with zero load
TEMP. CO-EFFICIENT:	0.02% per °C
OUTPUT NOISE:	Typically 1% of nominal V out
OVP:	OVP will shut down unit, manual reset by AC on line recycle
OVERLOAD PROTECTION:	Constant current limiting set at approx. 110% of output current with auto recovery
HOLD UP TIME:	20ms at rated power and input
START UP TIME:	Typically 250ms
LEAKAGE CURRENT:	0.75mA @ 100 / 200VAC
REMOTE SENSE:	Yes, 100 and 150W models only
REMOTE ON/OFF:	Option
PARALLEL OPERATION:	No
SERIES OPERATION:	Yes
OPERATING TEMP:	-10°C to +50°C at 100% load, derate to 60% load at 60°C
HUMIDITY:	10 - 95% RH non condensing
COOLING:	Convection cooled
ISOLATION:	Input - output 3000VAC Input - chassis 2000VAC Output - frame 500VAC
VIBRATION & SHOCK:	2G constant operating, <20G shock
SAFETY:	Approved to IEC950, EN60950, UL1950 and AS3260
EMI/RFI:	EN55011/EN55022/AS3548 class B
CONNECTIONS:	Screw terminals

JWS50 - 150 SERIES

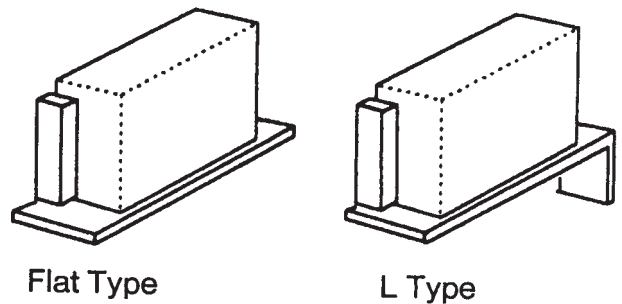
AC/DC Single Output: 50 - 150 Watts

MODEL	Output		Power W
	V	A (V Range)	
JWS50 - 3A	3.3V	10A 2.83 - 3.63V	33W
JWS50 - 5A	5V	10A 4.5 - 5.5V	50W
JWS50 - 9A	9V	5.6A 8.1 - 9.9V	51W
JWS50 - 12A	12V	4.3A 10.8 - 13.2V	52W
JWS50 - 15A	15V	3.5A 13.5 - 16.5V	52W
JWS50 - 24A	24V	2.2A 21.6 - 26.4V	52W
JWS50 - 28A	28V	2.0A 25.2 - 30.8V	56W
JWS50 - 48A	48V	1.1A 43.2 - 52.8V	52W
JWS75 - 3A	3.3V	15A 2.85 - 3.63V	50W
JWS75 - 5A	5V	15A 4.5 - 5.5V	75W
JWS75 - 12A	12V	6.3A 10.8 - 13.2V	75W
JWS75 - 15A	15V	5.0A 13.5 - 16.5V	75W
JWS75 - 24A	24V	3.2A 21.6 - 26.4V	76W
JWS75 - 48A	48V	1.6A 43.2 - 52.8V	76W
JWS100 - 3A	3.3V	20A 2.85 - 3.63V	66W
JWS100 - 5A	5V	20A 4.5 - 5.5V	100W
JWS100 - 6A	6V	16.7A 5.4 - 6.6V	100W
JWS100 - 9A	19V	11.2A 8.1 - 9.9V	100W
JWS100 - 12A	12V	8.5A 10.8 - 13.2V	102W
JWS100 - 15A	15V	7.0A 13.5 - 16.5V	105W
JWS100 - 24A	24V	4.5A 21.6 - 26.4V	108W
JWS100 - 28A	28V	3.6A 25.2 - 30.8V	100W
JWS100 - 48A	48V	2.1A 43.2 - 52.8V	100W
JWS150 - 3A	3.3V	30A 2.85 - 3.63V	100W
JWS150 - 5A	5V	30A 4.5 - 5.5V	150W
JWS150 - 12A	12V	13A 10.8 - 13.2V	156W
JWS150 - 15A	15V	10A 13.5 - 16.5V	150W
JWS150 - 24A	24V	6.5A 21.6 - 26.4V	156W
JWS150 - 28A	28V	5.5A 25.2 - 30.8V	154W
JWS150 - 48A	48V	3.3A 43.2 - 52.8V	158W

OPTIONAL DIN RAIL MOUNTING CLIPS



MOUNTING FLAT TYPE KIT OPTIONS

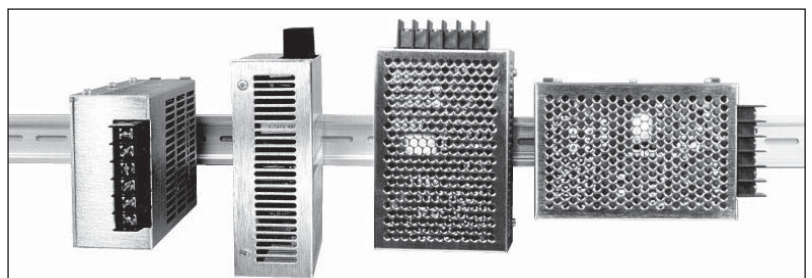


OPTIONAL MOUNTING BRACKETS

MODEL	Flat Type	L Type	DIN Rail
JWS50	A-21	L-09	L-DIN-50-75
JWS75	A-22	L-10	L-DIN-50-75
JWS100	A-23	L-11	L-DIN-100-150 or Clips
JWS150	A-24	L-12	L-DIN-100-150 or Clips

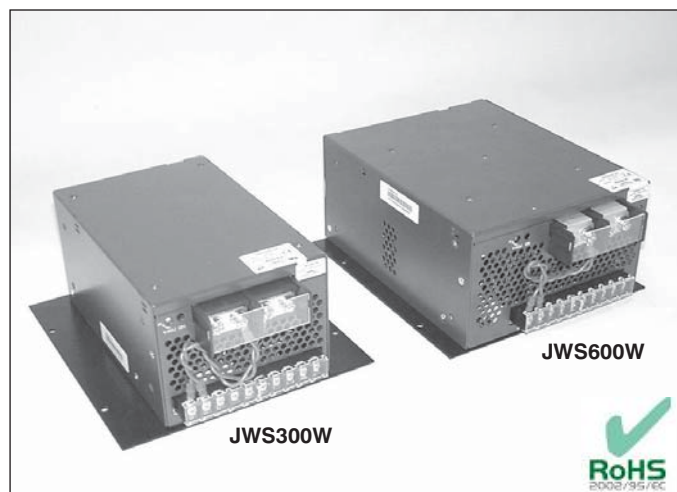
DIN RAIL MOUNTING OPTIONS

Using Din Rail "L" bracket or Din Rail clips for flush mounting



JWS300 - 600 SERIES

AC/DC Single Output: 300 - 600 Watts



Features

- Universal input 85 - 264VAC with PFC 0.99 typical
- Harmonic current per EN61000-3-2, RoHS compliant.
- Optional mounting plate
- Remote on/off and power fail monitoring.
- EMC to EN55011-B and EN55022-B.
- Immunity to EN61000-4-2, -3, -4, -5, -6.
- EN60950 / AS3260 certification.
- Parallel operation with current share.

MODEL	Output			Power W
	V	A	(V. Range)	
JWS300 - 2	2V	60A	1.8 - 2.4V	120W
JWS300 - 3	3.3V	60A	2.97 - 3.9V	198W
JWS300 - 5	5V	60A	4.5 - 6.0V	300W
JWS300 - 6	6V	50A	5.4 - 7.2V	300W
JWS300 - 9	9V	34A	8.1 - 10.8V	300W
JWS300 - 12	12V	27A	10.8 - 14.4V	324W
JWS300 - 15	15V	22A	13.5 - 18.10V	330W
JWS300 - 24	24V	14A	21.6 - 28.8V	336W
JWS300 - 28	28V	12A	25.2 - 33.6V	336W
JWS300 - 48	48V	6.5A	43.2 - 52.8V	312W
JWS600 - 2	2V	120A	1.8 - 2.4V	240W
JWS600 - 3	3.3V	120A	2.97 - 3.96V	396W
JWS600 - 5	5V	120A	4.5 - 6.0V	600W
JWS600 - 6	6V	100A	5.4 - 7.2V	600W
JWS600 - 8	8V	68A	7.2 - 9.6V	544W
JWS600 - 9	9V	68A	8.1 - 10.8V	612W
JWS600 - 12	12V	53A	10.8 - 14.4V	636W
JWS600 - 15	15V	43A	13.8 - 18.0V	645W
JWS600 - 24	24V	27A	21.6 - 28.8V	648W
JWS600 - 28	28V	23A	25.2 - 33.6V	644W
JWS600 - 48	48V	13A	43.2 - 52.8V	624W

Specifications

INPUT VOLTAGE:	85 - 264VAC, (120 - 330 VDC) 80 - 330VDC @ 80% load
POWER FACTOR:	0.99 @ 100VAC, 0.95 @ 230VAC
FREQUENCY:	47 - 63Hz
EFFICIENCY:	Model dependent typically 60 - 80%
INPUT CURRENT:	JWS300: 2.2A @ 200VAC JWS600: 4.1A @ 200VAC
OUTPUT POWER:	300 - 600W
OUTPUT VOLTAGE:	2V ~ 48V models: refer to table
OUTPUT V. ADJUSTMENT:	Typically -15% to +10% of nominal
LINE REGULATION:	Typically $\pm 0.4\%$ over input range
LOAD REGULATION:	Typically $\pm 0.6\%$ from no load to full load.
MINIMUM LOAD:	Units will operate with zero load
TEMP. CO-EFFICIENT:	0.02% per °C
OUTPUT NOISE:	Typically 1% of nominal V out
OVP:	OVP will shut down unit, manual reset by AC line recycle
OVERLOAD PROTECTION:	Constant current limiting set at approx. 110% of output current with auto recovery
HOLD UP TIME:	20ms at rated power and input
START UP TIME:	Typically 250ms
LEAKAGE CURRENT:	0.75mA / 0.44mA @ 100 / 200VAC
REMOTE SENSE:	Yes
REMOTE ON/OFF:	Yes
MONITOR SIGNAL:	Power Fail - open collector output
PARALLEL OPERATION:	Yes, with current share
SERIES OPERATION:	Yes
OPERATING TEMP:	-10°C to +50°C at 100% load, derate to 55% load at 65°C
COOLING:	Forced air on-board fan
ISOLATION:	Input - output 3000VAC Output - frame 500VAC
VIBRATION & SHOCK:	2G constant operating, <20G shock
SAFETY:	Approved to IEC950, EN60950, UL1950 and AS3260
EMI/RFI:	EN55011/EN55022/AS3548 class B
CONNECTIONS:	Screw terminals
DIMENSIONS:	JWS300: 216 x 120 x 92mm 1.9Kg JWS600: 226 x 160 x 92mm 3.0Kg

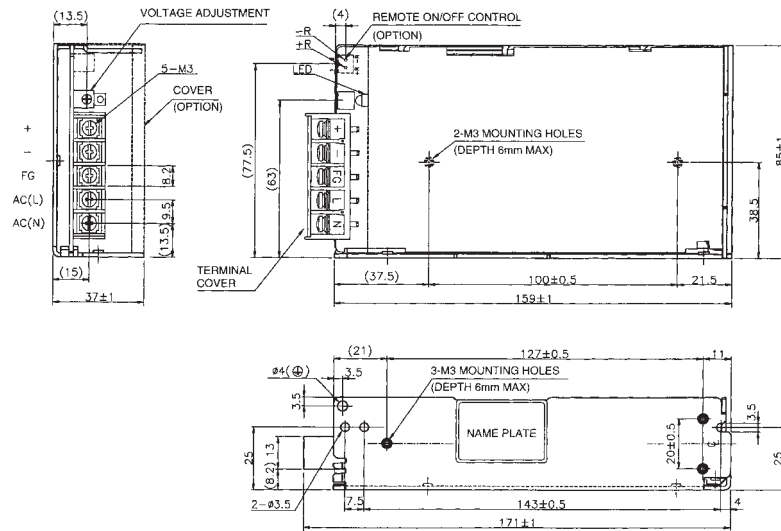
Instruction Manual/ Application Notes are available from our website



JWS SERIES

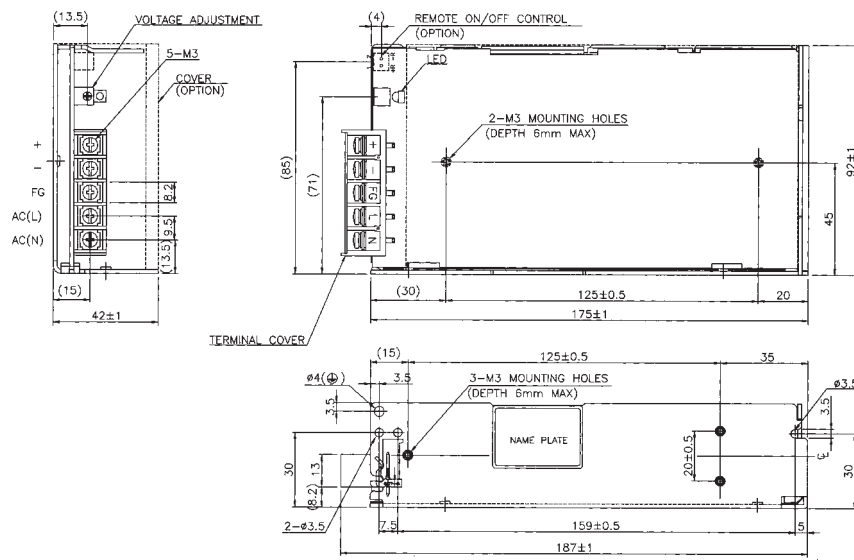
AC/DC Single Output: 50 - 600 Watts

JWS50



(Unit: mm)

JWS75



JWS100

