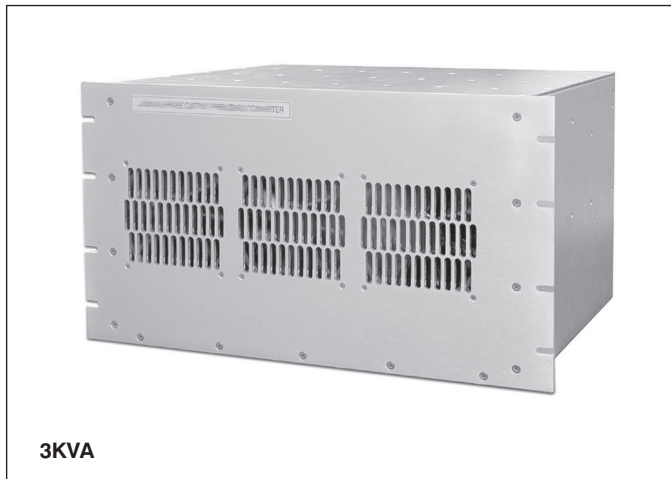


FTP SERIES

1-Phase to 3-Phase Frequency Converters: 1.5-6KVA



Features

- 1-phase to 3-phase Frequency Converters
- 1500VA to 6000VA power options
- 50, 60 and 400Hz options
- Sinusoidal wave shape
- Electronic protection
- Centre point (neutral) is floating and can be grounded
- Each output is floating from each other and can be connected in a "Y" configuration or left as three individual outputs
- Remote shutdown option
- Systems can be designed to customers requirements

General Specifications

Input Voltage:	115VAC 1- phase 60Hz, 400Hz 230VAC 1- phase 50Hz
Input Protection:	Thermal fuse. Inrush current limiting
EMI:	EN55022 Class A
Output Voltage: (Optional)	208VAC rms 3-phase 308VAC rms 3-phase 415VAC rms 3-phase The centre point (neutral) is floating, it can be grounded. Consult our office for other configurations.
Output Frequencies:	50, 60, 400Hz options
Frequency Stability:	±0.1%
Output Waveform:	Sinusoidal
Distortion:	Output voltage Harmonic Distortion less than 5% at full load.
Line Regulation:	±0.5%
Load Regulation:	±6% from 10% - 100% full load
Output Protection:	<ul style="list-style-type: none"> • Current limiting with short circuit protection • Thermal shutdown with auto recovery
Efficiency:	Typically 78% at nominal load
Load Crest Factor:	Maximum 3.0 at 90% load
Operating Temp:	0°C to +50°C at full load. Consult office for extended temperature options
Dimensions/Weight:	1500VA: 3U x 19in x 15in 19Kg 3000VA: 6U x 19in x 15in 22Kg 4500VA: 6U x 19in x 15in 40Kg 6000VA: 9U x 19in x 15in 40Kg

Description

The **FTP** series is a range of Frequency Converters that provide AC power conversion from 1-Phase to 3-Phase, as well as frequency conversion. The variety of 3-phase voltage and frequency outputs cover world-wide standard 3-phase voltages for powering equipment in a range of Industrial, Avionics and Telecom applications.

The units provide true sinusoidal wave form and power levels from 1.5KVA to 6KVA.

Units are manufactured to order and as such, can be designed to meet customers requirements and specifications.

- **For more detailed information on the FTP series, visit our website.**

Options

Alarms:	Output Fail Alarm: Voltage free relay contacts
Remote Inhibit:	Remote ON/OFF
Ruggedised:	Conformal coating and ruggedisation for use in harsh environments.
Connections:	Terminal block at rear of rack, other connections available on request.

FTP	Power	Input	Output	Options
Series	1500W = 1K5	A = 115V / 60Hz	A = 208V / 60Hz	AL = Alarm
	3000W = 3K	E = 230V / 50Hz	E = 415V / 50Hz	Output Alarm
	4500W = 4K5	M = 115V / 400Hz	M = 208V / 400Hz	
	6000W = 6K			

Input 1-phase	Output 3 -phase V	Hz	Power VA
115VAC 60/400Hz	208VAC 308VAC 415VAC	50, 60, 400Hz	1500VA 3000VA 4500VA 6000VA
230VAC 50Hz	208VAC 308VAC 415VAC	50, 60, 400Hz	1500VA 3000VA 4500VA 6000VA