

DVRDM20 SERIES

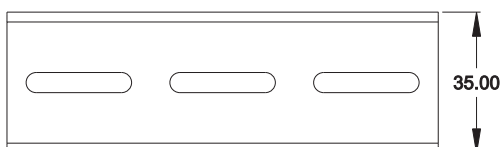
AC / DC Power Supply, Redundancy Module: 20A



Specifications

Input Voltage	24VDC (21 ~ 28)
No of Inputs	Two
Input Current	20A
Output Voltage	Input voltage – 0.5V drop
Output Current	20A
Voltage Adjustment	N / A
Input Voltage Alarm	Voltage free relay contacts: When input of A or B fail or < 20V or >30V ±5%
Relay Contact Rating	30VDC 1A
Insulation	Class I
Isolation	Terminal-Chassis: 500VAC Terminal-Contacts: 500VAC
Operating Temperature	-20°C to +70°C
Humidity	20-90% RH non-condensing
EMI	Conducted & Radiated EN55022 / CISPR22Class B
Immunity	EN61000-4
MTBF	150khrs -MIL-HDBK-217F @ 25°C
Dimensions	55.5 x 125.2 x 100mm (W*H*D)
Weight	550g

ADMISSIBLE DIN-RAIL: TS35/7.5 ORTS35/15



Features

- Output redundancy module for 24VDC systems
- 24V 20A
- Suitable for DIN rail mounting
- Relay alarm contact for monitoring
- LED Indicator for input failure
- Free air convection cooling
- EN51 022 EMI compliance Class B

Description

Then **DVRDM20** is a dc redundancy module that is designed to be used with 24Vdc power supplies. It is connected to two incoming 24V supplies and provides a single 24V output up to 20A capacity with **N+1** redundancy.

If either incoming 24V supply fails the other automatically takes over the load and triggers an alarm via a relay.

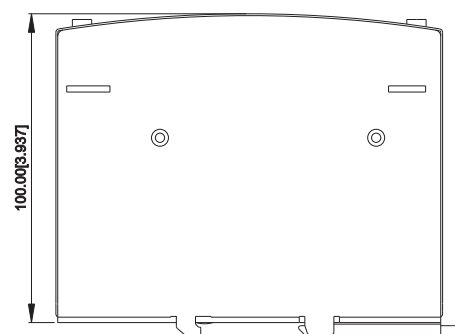
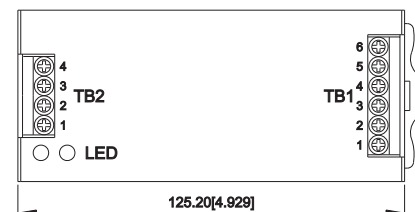
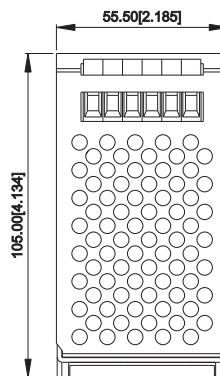
Ideally suited to be used with other 24V Din rail mounting power supplies, it's a cost effective solution to system reliability.

Terminal Pin No.Assignment (TB1)

Pin NO.	Assignment
1	Vout+
2	Vout-
3,4	Vin-
5	Vin B+
6	Vin A+

Terminal Pin No.Assignment (TB2)

Pin NO.	Assignment
1	Alarm B1
2	Alarm B2
3	Alarm A1
4	Alarm A2



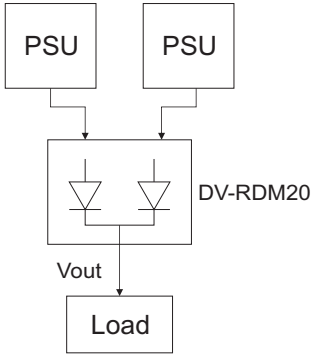
DVRDM20 SERIES

AC / DC Power Supply, Redundancy Module: 20A

Typical Application Notes :

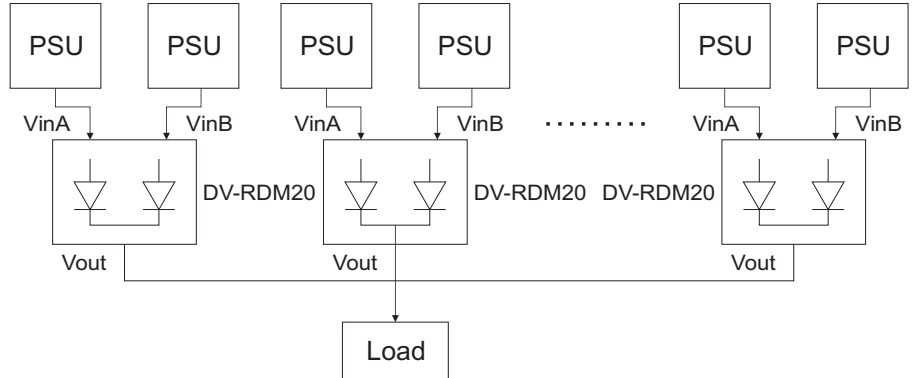
a. 1+1 Redundancy:

Using 1 more PSU as the redundant unit



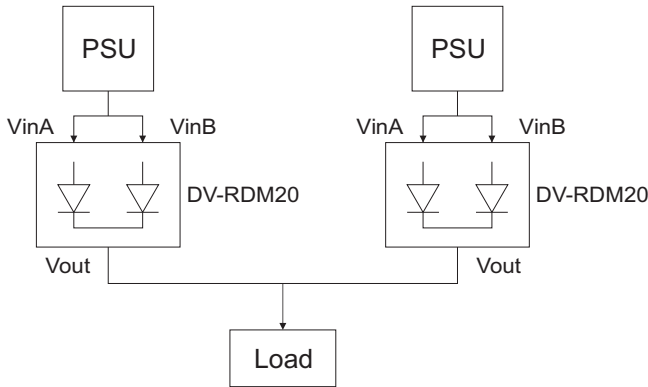
b. 1+N Redundancy:

Using more PSUs as the redundant units to increase the reliability

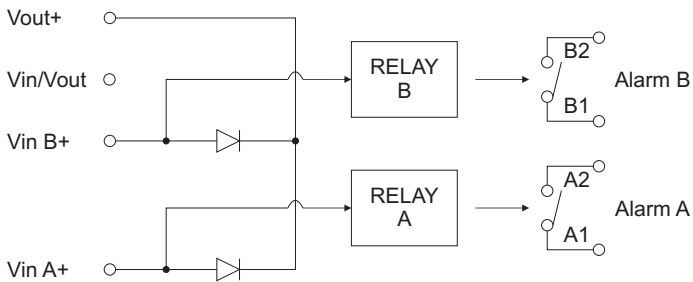


c. Single Use:

Connecting only one PSU to one SD-RDM20 to reduce the stress of the diodes and hence increase the reliability



Block Diagram



Derating Curve

