

# DLP SERIES

AC/DC Single Output Din Rail: 75 ~ 240 Watts



## Features

- Wide input voltage range
- Five power levels. 75 ~ 240 watts
- PFC and Harmonics Corrected to EN61000-3-2
- EMI: EN 55022- B
- International safety approvals
- CE marked
- Industry standard form factor
- LED Indicators for Power On and Over load
- Fully regulated 24V output
- Zero load operation
- Short Circuit and Over voltage protection

## Specifications:

<b>Input Voltage</b>	110 / 240 AC Auto Select: 75 ~ 120 watts 85 ~ 264VAC : 180 ~ 240 watts 120 ~ 370VDC: 180 ~ 240 watts
<b>Frequency</b>	47 ~ 63Hz
<b>Output Voltage</b>	24VDC
<b>Output V Range</b>	21.6 ~ 28V
<b>Indicator</b>	LED - Green ( Power ON ) LED - Red ( Alarm )
<b>Output Power</b>	75 ~ 240 watts
<b>Efficiency</b>	Model dependent 82 ~ 87%
<b>Input Current</b>	DLP75: 0.8A DLP100- DLP120: 1.4A DLP180- DLP240: 1.3A
<b>Input Harmonics</b>	EN61000-3-2
<b>Power Factor</b>	Model dependent > 0.9
<b>Ripple &amp; Noise</b>	240mV pk-pk
<b>Load Regulation</b>	192mV maximum
<b>Line Regulation</b>	120mV maximum
<b>Temp Coefficient</b>	0.05% per °C
<b>Over current Protection</b>	<b>DLP75:</b> Foldback current limit with auto recovery. <b>DLP100-240:</b> Constant current limiting with auto recovery.

<b>Over Voltage Protection</b>	OVP circuit will shutdown output. Recycle AC power after >30 secs to restart
<b>Hold-Up Time</b>	20 / 30ms @ 100 / 230VAC
<b>Leakage Current</b>	<0.75mA
<b>Parallel Operation</b>	NO
<b>Series Operation</b>	YES
<b>Operating Temperature</b>	-10°C to +50°C at 100% load. Derate to 60% load at 60°C
<b>Humidity</b>	30 ~ 90% RH operating
<b>Cooling</b>	Convection cooled
<b>Isolation Voltage</b>	Input – Output: 3000VAC Input – Ground: 2000VAC Output – Ground: 500VAC
<b>Safety</b>	UL1950, EN60950, UL508, UL50178
<b>EMI</b>	EN55011 / EN55022 Lev B
<b>Immunity</b>	EN61000-6-2
<b>Weight</b>	DLP75: 40g DLP100: 540g DLP120: 540g DLP180: 780g DLP240: 1kg
<b>Dimension ( W x H x D )</b>	DLP75: 50 x 113 x 110mm DLP100: 60 x 113 x 110mm DLP120: 60 x 113 x 110mm DLP180: 80 x 113 x 110mm DLP240: 120 x 113 x 110mm

Model	Output V	Output A	Power W
DLP75-24-1	24V	3.1A	75W
DLP100-24-1	24V	4.1A	100W
DLP120-24-1	24V	5.0A	120W
DLP180-24-1	24V	7.5A	180W
DLP240-24-1	24V	10A	240W

- Stock line models

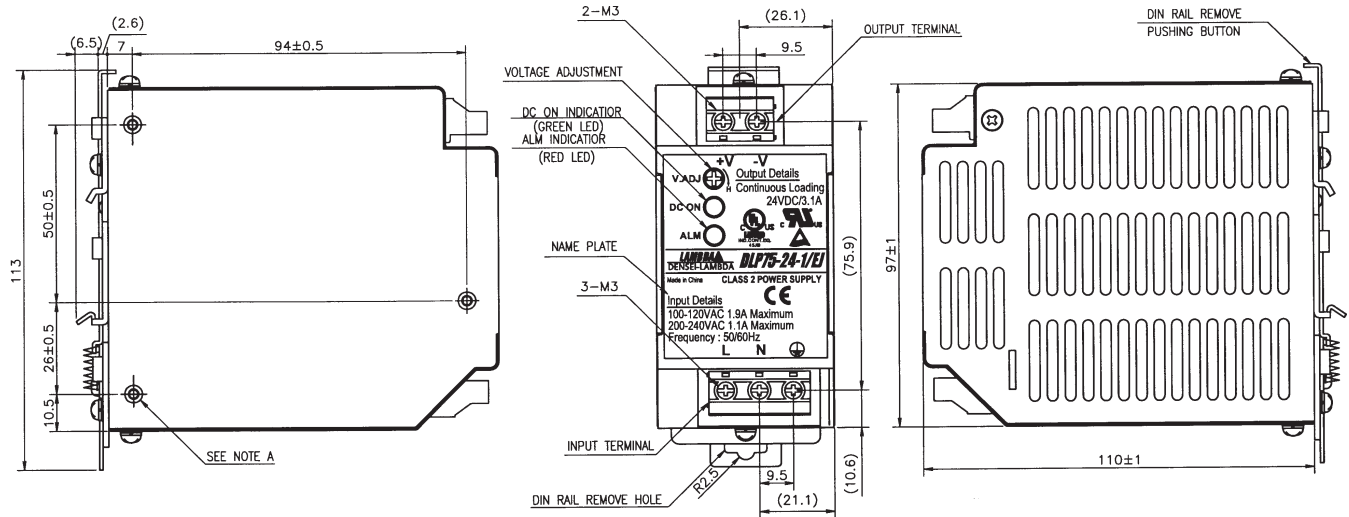
Model	Output V	Output A	Power W
DLP75-24-1EJ	24V	3.1A	75W
DLP100-24-1EJ	24V	4.1A	100W
DLP120-24-1EJ	24V	5.0A	120W
DLP180-24-1EJ	24V	7.5A	180W
DLP240-24-1EJ	24V	10A	240W

- Models with Phoenix type terminals

# DLP SERIES

AC/DC Single Output Din Rail: 75 ~ 240 Watts

## DLP75



## DLP100/DLP120

